

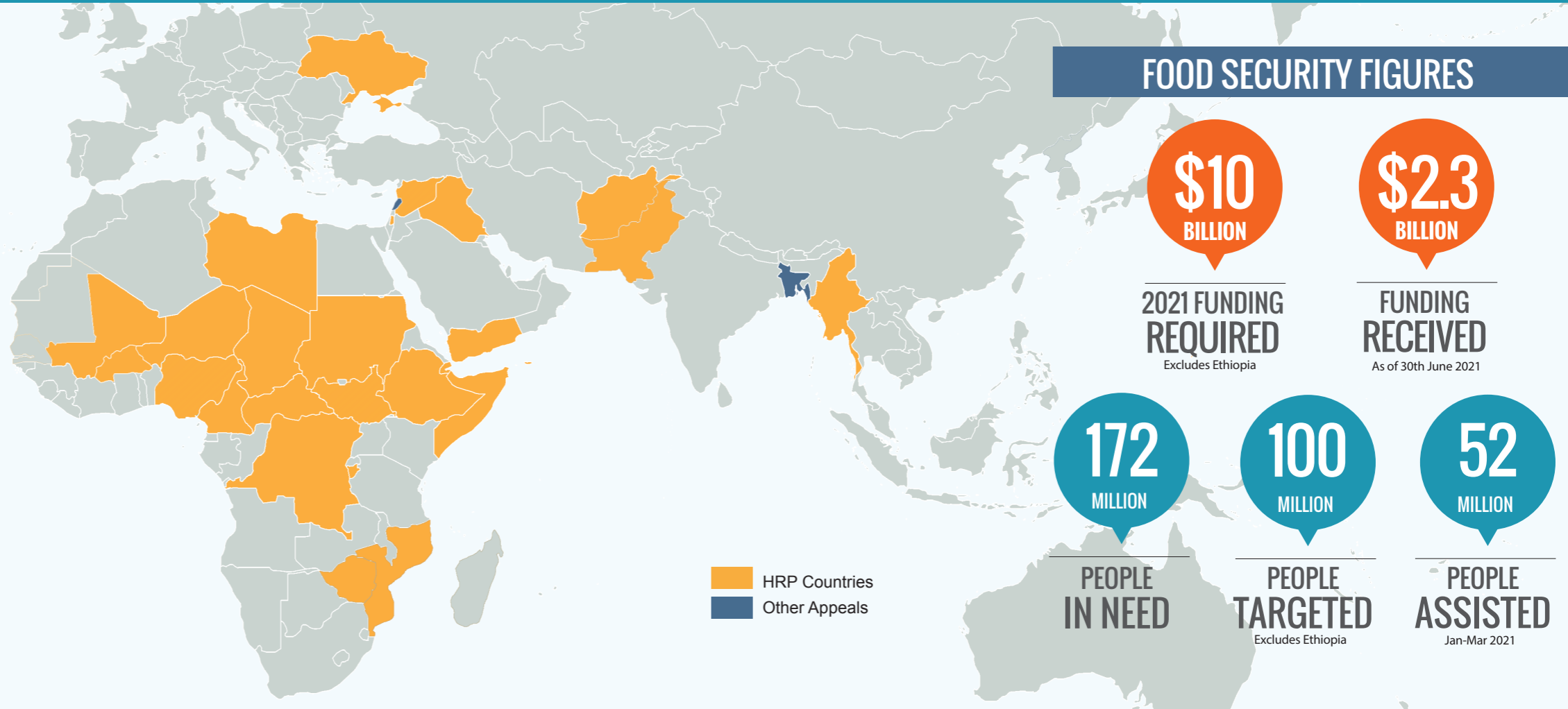
2021 FOOD SECURITY COMPONENT OF THE GLOBAL HUMANITARIAN OVERVIEW

The boundaries and names shown and the designations used on this map do not imply official endorsement or acceptance by the United Nations.

Dotted line represents approximately the Line of Control in Jammu and Kashmir agreed upon by India and Pakistan. The final status of Jammu and Kashmir has not yet been agreed upon by the parties.

Final boundary between the Republic of Sudan and the Republic of South Sudan has not yet been determined.

Beneficiaries and funding figures include only those operations where a Cluster/Sector is active. Funding figures are extracted from OCHA FTS, based on field Cluster/Sector allocations, except when specified otherwise. Some countries are still pending data review on beneficiaries.



HUMANITARIAN RESPONSE PLANS

AFGHANISTAN
TOT. POPULATION 34.5 MIL

- 17.6M (People in Need)
- 14.2M (People Targeted)
- 2.1M (Food Assistance)
- 357,5K (Livelihoods & Agriculture Assistance)
- \$553.9M (FS Funding Requirement)
- \$108.5M (FS Funding Received)
- 20% FS FUNDED

BURKINA FASO
TOT. POPULATION 20.3 MIL

- 2.9M (People in Need)
- 2.5M (People Targeted)
- 825,5K (Food Assistance)
- 34,4K (Livelihoods & Agriculture Assistance)
- \$251M (FS Funding Requirement)
- \$50.8M (FS Funding Received)
- 20% FS FUNDED

BURUNDI
TOT. POPULATION 11.7 MIL

- 2M (People in Need)
- 736K (People Targeted)
- (Food Assistance)
- (Livelihoods & Agriculture Assistance)
- \$26M (FS Funding Requirement)
- \$19.1M (FS Funding Received)
- 74% FS FUNDED

CAMEROON (NWSW)
TOT. POPULATION 25 MIL

- 680K (People in Need)
- 419K (People Targeted)
- 362K (Food Assistance)
- 2,2K (Livelihoods & Agriculture Assistance)
- \$61M (FS Funding Requirement)
- \$- (FS Funding Received)
- 41% FS FUNDED

CAR
TOT. POPULATION 4.6 MIL

- 2.3M (People in Need)
- 1.8M (People Targeted)
- 894K (Food Assistance)
- 111,7K (Livelihoods & Agriculture Assistance)
- \$168M (FS Funding Requirement)
- \$49.8M (FS Funding Received)
- 30% FS FUNDED

CHAD
TOT. POPULATION 14.7 MIL

- 4.6M (People in Need)
- 3.1M (People Targeted)
- 237,5K (Food Assistance)
- 213,9K (Livelihoods & Agriculture Assistance)
- \$159.7M (FS Funding Requirement)
- \$5.4M (FS Funding Received)
- 3% FS FUNDED

COLOMBIA
TOT. POPULATION 50.3 MIL

- 6.2M (People in Need)
- 418K (People Targeted)
- 168,1K (Food Assistance)
- 2,7K (Livelihoods & Agriculture Assistance)
- \$34,5M (FS Funding Requirement)
- \$765k (FS Funding Received)
- 2% FS FUNDED

DRC
TOT. POPULATION 94 MIL

- 19.6M (People in Need)
- 9.6M (People Targeted)
- (Food Assistance)
- (Livelihoods & Agriculture Assistance)
- \$831M (FS Funding Requirement)
- \$49.4M (FS Funding Received)
- 6% FS FUNDED

ETHIOPIA (Food)
TOT. POPULATION 94.3 MIL

- 13.7M (People in Need)
- ** (People Targeted)
- 9.2M* (Food Assistance)
- ** (Livelihoods & Agriculture Assistance)
- \$557.5M (FS Funding Requirement)
- ** (FS Funding Received)

*Reached includes Northern Ethiopia response but funding doesn't
**HRP not yet published

ETHIOPIA (Agriculture)
TOT. POPULATION 94.3 MIL

- 13M (People in Need)
- ** (People Targeted)
- 205K (Food Assistance)
- ** (Livelihoods & Agriculture Assistance)
- \$13.9M (FS Funding Requirement)
- ** (FS Funding Received)

**HRP not yet published

HAITI
TOT. POPULATION 10.9 MIL

- 4.4M (People in Need)
- 1.3M (People Targeted)
- 255,5K (Food Assistance)
- 61,8K (Livelihoods & Agriculture Assistance)
- \$156M (FS Funding Requirement)
- \$371k (FS Funding Received)
- 1% FS FUNDED

IRAQ
TOT. POPULATION 37 MIL

- 731K (People in Need)
- 421K (People Targeted)
- 191,7K (Food Assistance)
- 840 (Livelihoods & Agriculture Assistance)
- \$75,6M (FS Funding Requirement)
- \$7.7M (FS Funding Received)
- 10% FS FUNDED

LIBYA
TOT. POPULATION 6.5 MIL

- 699K (People in Need)
- 160K (People Targeted)
- 103,4K (Food Assistance)
- 1,9K (Livelihoods & Agriculture Assistance)
- \$25M (FS Funding Requirement)
- \$6M (FS Funding Received)
- 24% FS FUNDED

MALI
TOT. POPULATION 18.9 MIL

- 2.2M (People in Need)
- 1.8M (People Targeted)
- 247,131K (Food Assistance)
- 169,896K (Livelihoods & Agriculture Assistance)
- \$232.4M (FS Funding Requirement)
- \$29.8M (FS Funding Received)
- 13% FS FUNDED

MOZAMBIQUE
TOT. POPULATION 30.3 MIL

- 950K (People in Need)
- 750K (People Targeted)
- 716K (Food Assistance)
- 94,7K (Livelihoods & Agriculture Assistance)
- \$136M (FS Funding Requirement)
- \$9M (FS Funding Received)
- 7% FS FUNDED

MYANMAR
TOT. POPULATION 53.8 MIL

- 782.9K (People in Need)
- 601,2K (People Targeted)
- (Food Assistance)
- (Livelihoods & Agriculture Assistance)
- \$79.3M (FS Funding Requirement)
- \$23.8M (FS Funding Received)
- 30% FS FUNDED

NIGER
TOT. POPULATION 21 MIL

- 2M (People in Need)
- 1.3M (People Targeted)
- 584K (Food Assistance)
- 14K (Livelihoods & Agriculture Assistance)
- \$110.2M (FS Funding Requirement)
- \$12.9M (FS Funding Received)
- 12% FS FUNDED

NIGERIA
TOT. POPULATION 187 MIL

- 5.1M (People in Need)
- 4.3M (People Targeted)
- 1.5M (Food Assistance)
- 302,5K (Livelihoods & Agriculture Assistance)
- \$354M (FS Funding Requirement)
- \$68M (FS Funding Received)
- 19% FS FUNDED

PAKISTAN
TOT. POPULATION 216.6 MIL

- 5.8M (People in Need)
- 1.7M (People Targeted)
- 460K* (Food Assistance)
- 182K* (Livelihoods & Agriculture Assistance)
- \$56.6M (FS Funding Requirement)
- \$1.4M (FS Funding Received)
- 3% FS FUNDED

*Preliminary figures

PALESTINE
TOT. POPULATION 4.9 MIL

- 2M (People in Need)
- 1.7M (People Targeted)
- 1.5M (Food Assistance)
- 25,8K (Livelihoods & Agriculture Assistance)
- \$262.1M (FS Funding Requirement)
- \$83.7M (FS Funding Received)
- 32% FS FUNDED

SOMALIA
TOT. POPULATION 12.3 MIL

- 3.5M (People in Need)
- 3.2M (People Targeted)
- 1.7M (Food Assistance)
- 400K (Livelihoods & Agriculture Assistance)
- \$396.6M (FS Funding Requirement)
- \$65.3M (FS Funding Received)
- 16% FS FUNDED

SOUTH SUDAN
TOT. POPULATION 12.7 MIL

- 7.7M (People in Need)
- 5.7M (People Targeted)
- 2.1M (Food Assistance)
- 520,8K (Livelihoods & Agriculture Assistance)
- \$644.2M (FS Funding Requirement)
- \$110.4M (FS Funding Received)
- 17% FS FUNDED

SUDAN
TOT. POPULATION 40.8 MIL

- 7.1M (People in Need)
- 6.2M (People Targeted)
- 3.5M* (Food Assistance)
- 108,7K* (Livelihoods & Agriculture Assistance)
- \$521M (FS Funding Requirement)
- \$147M (FS Funding Received)
- 28% FS FUNDED

*Preliminary figures

SYRIA
TOT. POPULATION 18.6 MIL

- 14.2M (People in Need)
- 13.2M (People Targeted)
- 5.6M (Food Assistance)
- 395,3K (Livelihoods & Agriculture Assistance)
- \$1.56B* (FS Funding Requirement)
- \$- (FS Funding Received)

*Indicative

UKRAINE
TOT. POPULATION 45 MIL

- 1.5M (People in Need)
- 80K (People Targeted)
- 10K (Food Assistance)
- 2K (Livelihoods & Agriculture Assistance)
- \$21M (FS Funding Requirement)
- \$2.6M (FS Funding Received)
- 12% FS FUNDED

VENEZUELA
TOT. POPULATION 32 MIL

- 2.4M* (People in Need)
- 700K (People Targeted)
- (Food Assistance)
- (Livelihoods & Agriculture Assistance)
- \$89.4M (FS Funding Requirement)
- \$1.18M (FS Funding Received)
- 1% FS FUNDED

*As of 2020 HRP

YEMEN
TOT. POPULATION 30 MIL

- 16.2M (People in Need)
- 16M (People Targeted)
- 13.6M (Food Assistance)
- 1.5M (Livelihoods & Agriculture Assistance)
- \$1.7B (FS Funding Requirement)
- \$821.5M (FS Funding Received)
- 48% FS FUNDED

ZIMBABWE
TOT. POPULATION 30 MIL

- 5.6M (People in Need)
- 3.7M (People Targeted)
- 334K* (Food Assistance)
- 5K* (Livelihoods & Agriculture Assistance)
- \$353.3M (FS Funding Requirement)
- \$2.3M (FS Funding Received)
- 1% FS FUNDED

*Not including the non-HRP response (2M+ people)

OTHER APPEALS

- BANGLADESH (Cox's Bazar)**: \$247.2M (5% FS FUNDED)
- COLOMBIA (RMRP)**: \$111M (as for RMRP)
- LEBANON (LCRP)**: \$826M (as for LCRP)

LEGEND

- FS FUNDING REQUIREMENT
- FS FUNDING RECEIVED
- FS PEOPLE IN NEED
- FS PEOPLE TARGETED
- Food Assistance
- Livelihoods & Agriculture Assistance

GLOBAL FOOD SECURITY CLUSTER
www.fscluster.org
info@fscluster.org