



**FOOD SECURITY
CLUSTER**

GLOBAL PARTNERS MEETING

11/12 November 2020





01

**THE PERSISTENCE OF
FOOD INSECURITY**



02

**FSC: HOW WE
RESPOND**



03

**WAY
FORWARD**



04

**IMPROVE EFFICIENCY
WITHIN THE 2030
AGENDA**



05

**INNOVATIVE
APPROACHES**

THE PERSISTENCE OF FOOD INSECURITY

PRE-COVID SITUATION



135 million

people in Crisis or worse (IPC/CH Phase 3+)

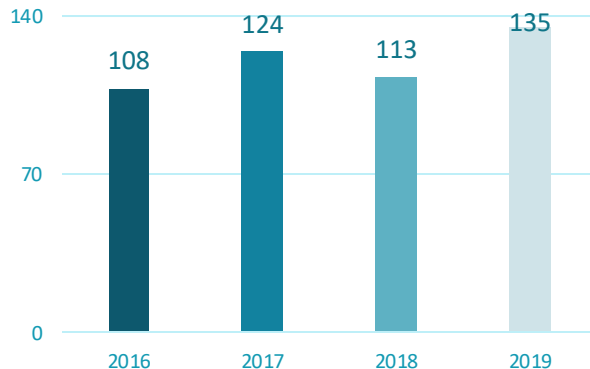
183 million

people in Stress (IPC/CH Phase 2)



SOFI: CHRONIC FOOD INSECURITY

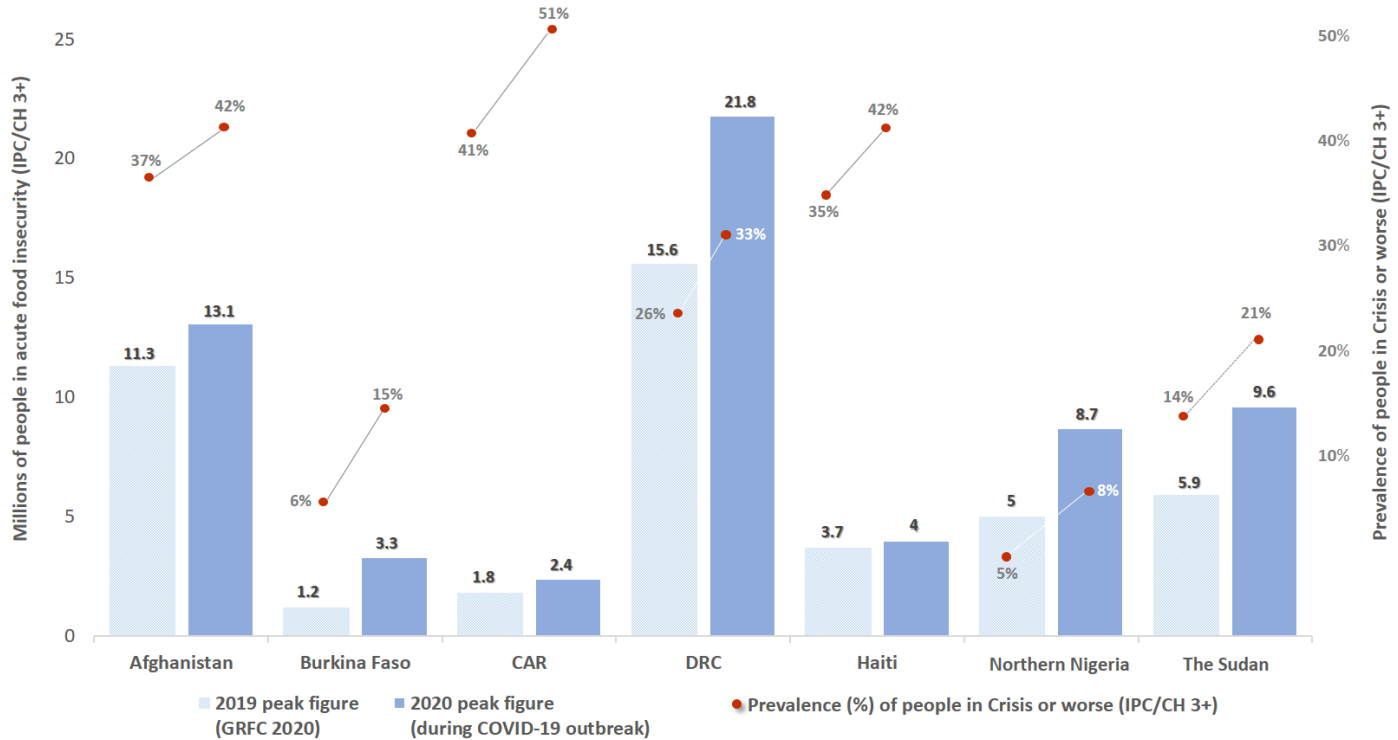
Nearly **690 million** estimated as undernourished in 2019. Trend growing by 10 million every year, projection to reach **840 million in 2030**



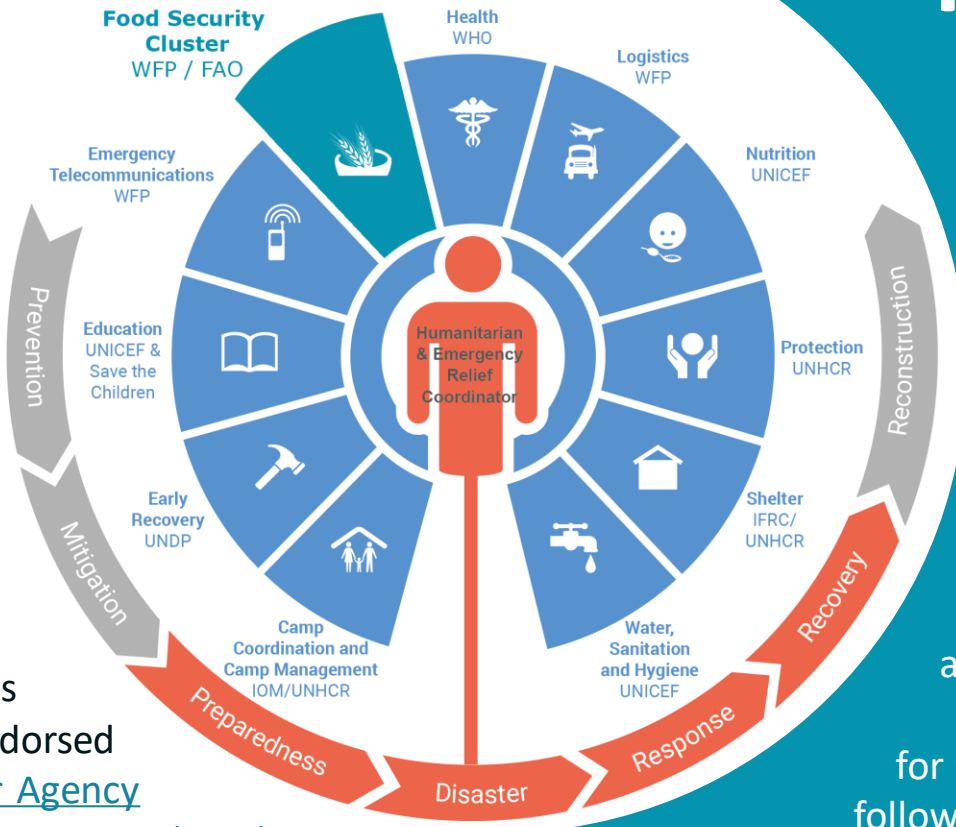
FOOD INSECURITY TREND

In the last four years, **over 100 million people** have consistently been in severe acute food insecurity

2019 data vs 2020



FSC: HOW WE RESPOND

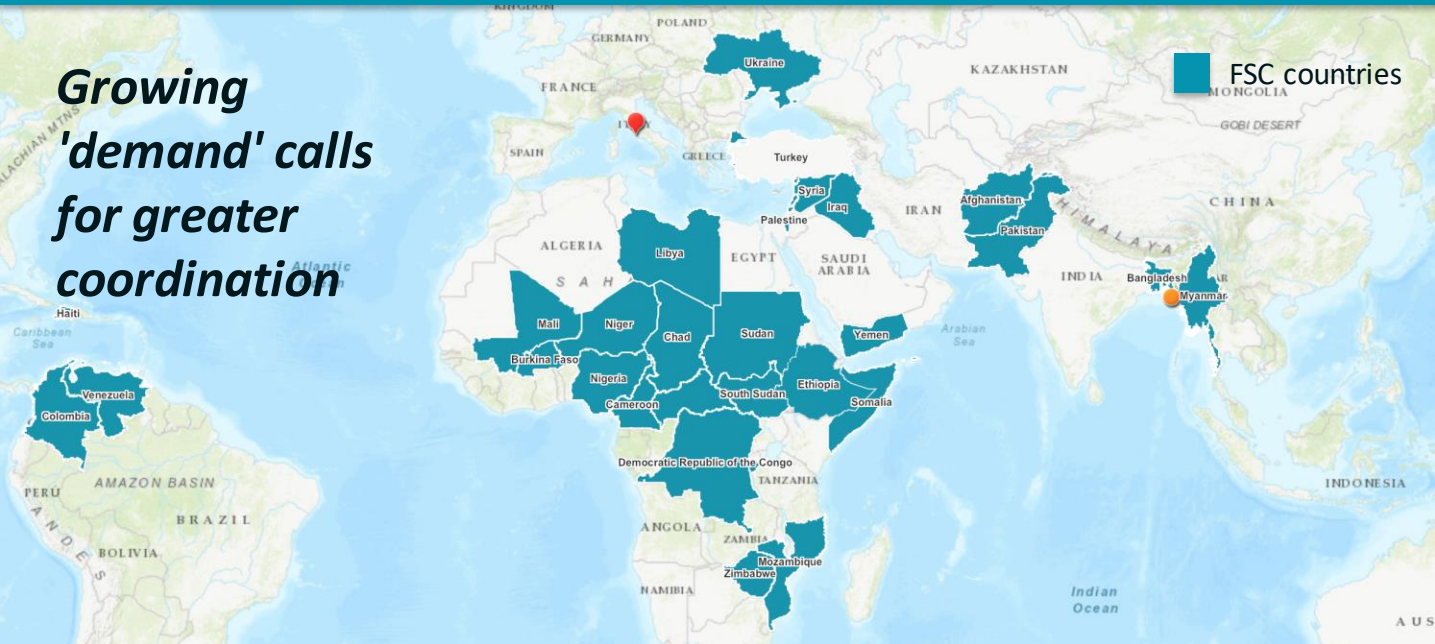


The FSC was formally endorsed by the [Inter Agency Standing Committee \(IASC\)](#) on 15 December 2010

The Cluster approach was adopted for the first time following the 2005 earthquake in Pakistan.

WHAT DO WE DO AS FSC?

*Growing
'demand' calls
for greater
coordination*



2019 FOOD SECURITY NUMBERS

32

Active Clusters

130M

People
In Need

84M

People
Targeted

74.7M

People
Assisted

\$8.1B

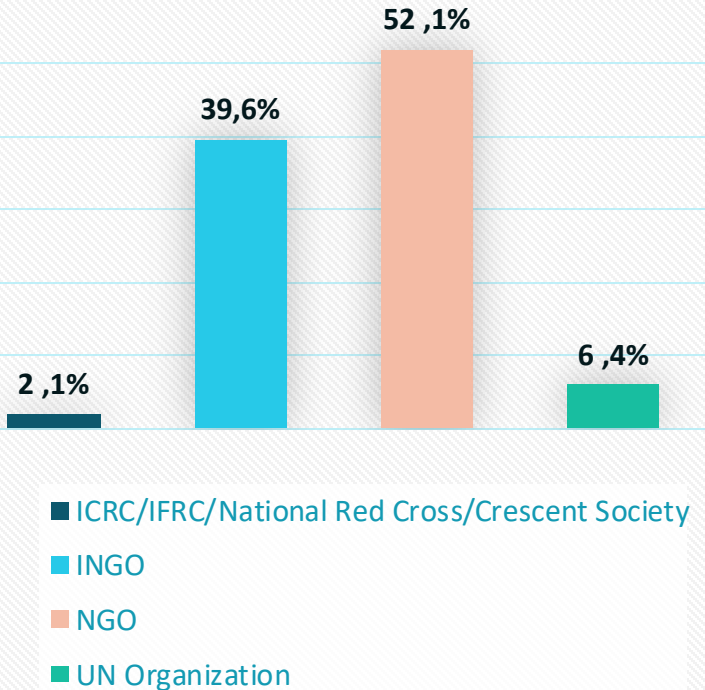
Funding
Requirement

\$5.1B

Funding
Received

FSC PARTNERS

IN-COUNTRY PARTNERS*



Over 70 partners of the global food security cluster

1500 Partners at country-level

Average 50 partners per country

*Based on data from 22 countries

MAJOR FOOD SECURITY RESPONSE



2013

PHILIPPINES (TYPHOON HAIYAN)

- Partners provided cluster coordination at sub-national level
- FSAC transitioned into government-led coordination structures for recovery and rehabilitation activities

2014

EBOLA (West Africa)

- FSC partners helped to better understand the impact of the EVD crisis on FS and coordinate between FS and other sectors



2015

NEPAL EARTHQUAKE

- Adoption of local arrangements at district level led to FSC operating effectively at that level



2016

HAITI Hurricane Matthew

Operating with scarce resources in a *forgotten-crisis* country:

- Only 9 partners (3 national, 6 international)
- USD 139M required yet just USD 86.5M received (62%)



2017

4-COUNTRIES FAMINE PREVENTION OPERATION

(South Sudan, Yemen, North-East Nigeria, Somalia)

- Major investments on advocacy and anticipatory action



2017

BANGLADESH (Rohingya Crisis)

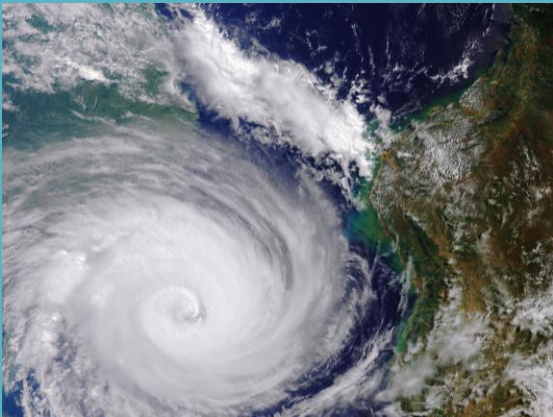
- Promote market-based approaches and economic interactions between refugees and host communities
- Stronger focus on environmental sustainability (Energy and Environment WGs and scale of environmental activities)

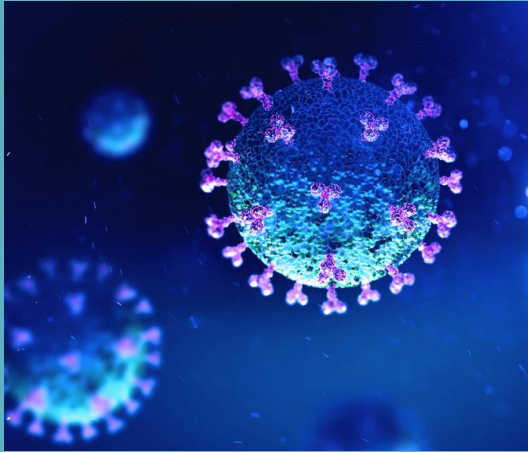


2019

CYCLONES IDAI & KENNETH (Zimbabwe, Mozambique, Comoros)

- Shift gears from national clusters in Maputo to subnational coordination in Beira/Chimoio and Pemba
- Need for preparedness, disaster risk reduction and climate change adaptation in disaster-prone countries





2020 COVID-19

- Creation of the COVID-19 TWG with 48 organizations and over 150 members

2020 DESERT LOCUST

- Collaboration with established regional coordination mechanisms and local ownership



Thank you!